



drake & co  
ESTATE AGENTS



# 1 HALL ROAD MANCHESTER

£135 Per Week

Student Accommodation Available 1st July 2026 £135pppw\*

This three storey mid terraced property has four large double bedrooms, a large fitted modern dining kitchen overlooking the rear yard and separate communal lounge. Stylish new blinds have recently been installed. Tenants also benefit from the spacious bathroom and a separate shower room. Located a short walk from Wilmslow Road, tenants are close to the famous Curry Mile and all major bus routes into Manchester City Centre and to the universities.

Property Reference: P1333

\*Bills Paid Ltd manage the utilities at the property, their Inclusive Bills Package covers: gas, electric, broadband, water and a TV Licence, for an additional £26pppw (terms and conditions apply).

- 12 month tenancy
- Deposit equivalent to 5x weekly rent
- Holding deposit equivalent to 1x weeks rent due to secure the property, this goes towards the total deposit due
- Rent and utilities calculated per calendar month (not four weeks basis)

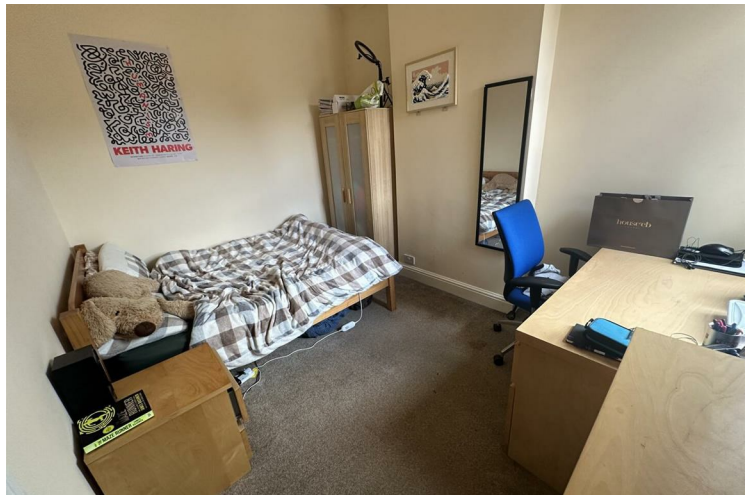
Don't miss out, contact the office and quote the property reference above to book your viewing today!

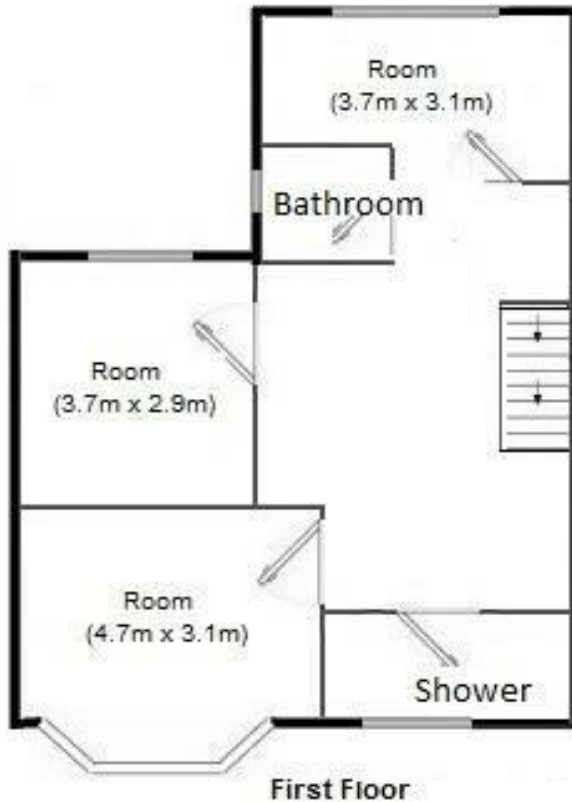
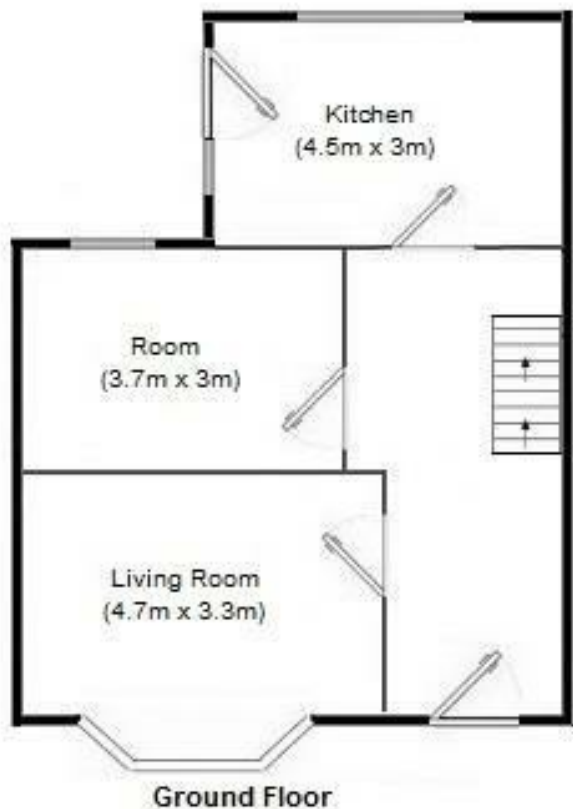
Disclaimer: These particulars are believed to be accurate but they are not guaranteed and do not form a contract. Any images, videos and/or floorplans on this brochure are for guidance purposes only and are not necessarily to scale.



- 4 Bedrooms • House • Rusholme • Fully furnished • 2 Bathrooms/shower rooms • Inclusive Bills
- £26pppw • 24HR cover • Washer/Dryer







Energy Efficiency Rating		
	Current	Potential
<i>Very energy efficient - lower running costs</i>		
(92 plus) <b>A</b>		
(81-91) <b>B</b>		<b>85</b>
(69-80) <b>C</b>	<b>69</b>	
(55-68) <b>D</b>		
(39-54) <b>E</b>		
(21-38) <b>F</b>		
(1-20) <b>G</b>		
<i>Not energy efficient - higher running costs</i>		
<b>England &amp; Wales</b>		EU Directive 2002/91/EC

**EPC Rating: C    Council Tax Band: C**

Agents Note: Whilst every care has been taken to prepare these particulars, they are for guidance purposes only. All measurements are approximate and are for general guidance purposes only and whilst every care has been taken to ensure their accuracy, they should not be relied upon and potential buyers/tenants are advised to recheck the measurements

Drake & Co  
 Anson Parade  
 161a Dickenson Road  
 Rusholme  
 Manchester  
 M14 5HZ

0161 224 2134  
 info@drakes.co.uk  
<https://www.drakes.co.uk/>

